

# CELL POWER

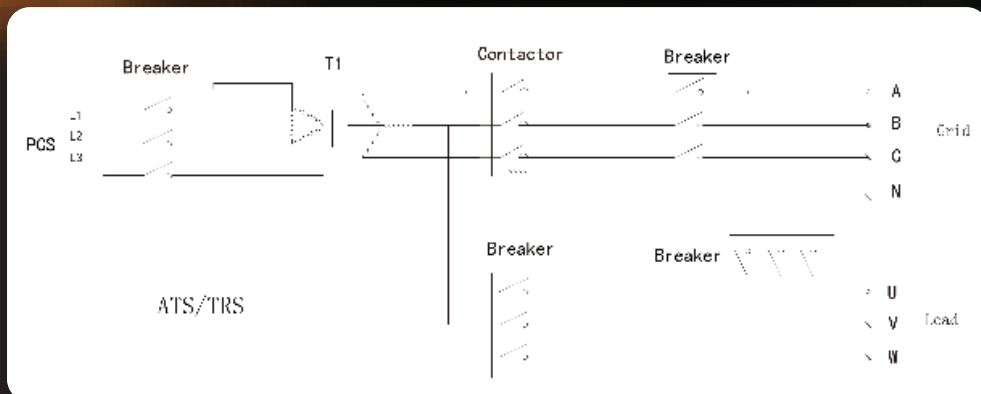
**CESS 100-50 ATS**

ATS100D cabinet is an on-grid and off-grid switching device with its own inside transformer.

## Features

- Anti-reflux function
- On/off-grid transfer
- Built-in EMS
- Self-contained transformer
- Parallel system
- 4G module

## Block Diagram



## Datasheet

Rated Voltage	400V	Transformer	50K/100K
Rated current	144A	Lightning protection	Type II
Rated frequency	50Hz/60Hz	Protection degree	IP54
Rated power	100KVA	Relative humidity	0~100%
Max. current(Charge+Load)	288A	Operating temperature	-25 °C~+60 °C
Transfer between on/off grid	Automatic≤100ms	Cooling Mode	Air
Zero export function	Opt	Dimension (W/D/H)	930/900/2380mm
PCS breaker	125A*2	Weight	791kg
Grid breaker	400A	Working Altitude	≤3000m
Load breaker	200A	Communication	RS485/4G/Ethernet
Bypass breaker	200A	Install	Tower-type



### Quality system

LFP: Safe, Long-life: 5000+ cycles, high energy density and PGS 37-1 compatible



### Experience

35+ years of battery knowledge and 10 years of lithium knowledge within Intercel



### Turn-key systems

Pre-assembled, pre-tested and plug-and-play systems. Batteries, thermal management, inverters and fire suppression systems are fully integrated



### Easy expandability

Systems are many times expandable when grid connected. It is easy to connect additional systems.