

Introducing our advanced IoT monitoring platform

Experience real-time monitoring of your Cellpower batteries with our state-of-the-art IoT platform. Optimize performance, extend battery life, and minimize downtime through our comprehensive monitoring solutions. Stay ahead with upcoming features, including a digital twin of your machine and fuel cost saving calculations.

Benefits



Extend battery lifespan



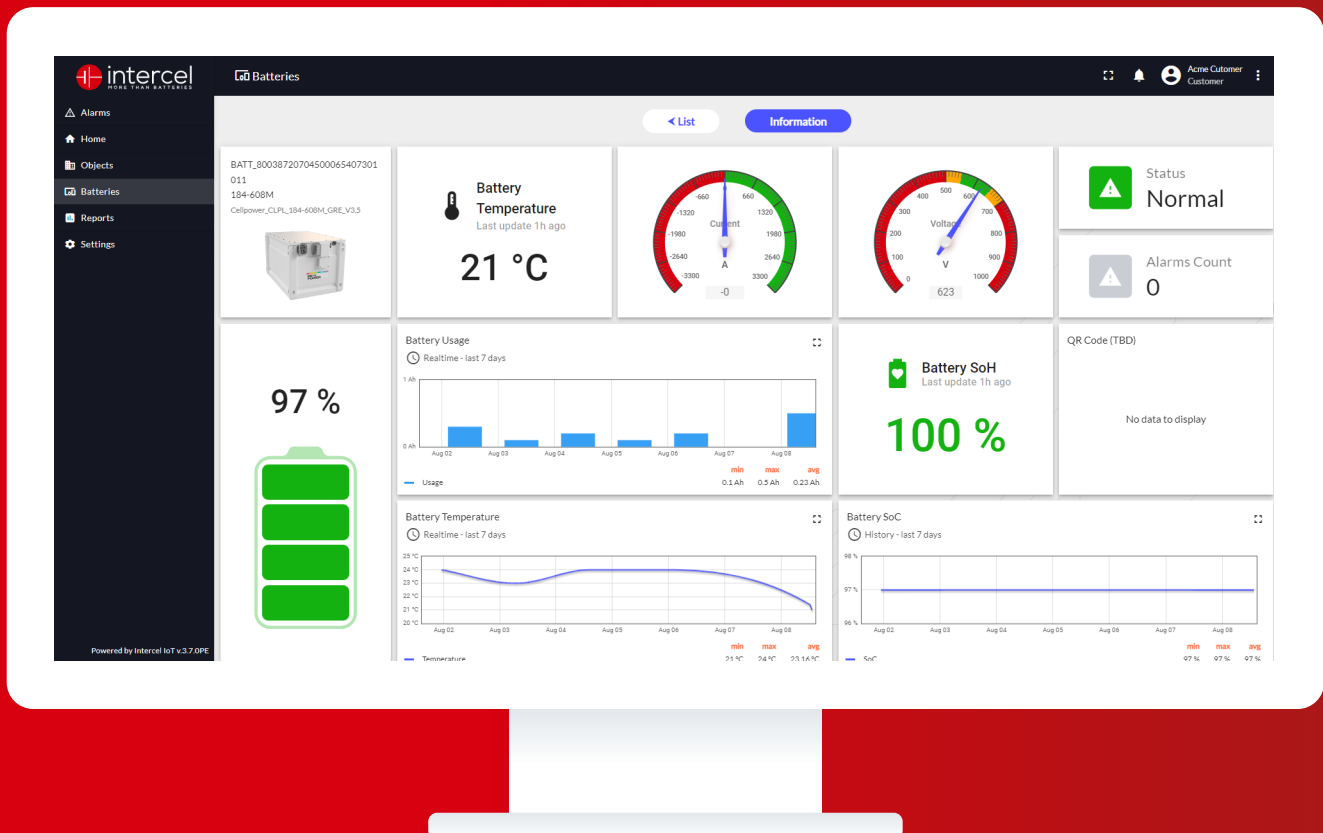
Minimize operational downtime



Always know the location of your batteries



Improve overall machine efficiency



Key Features

- Data Security & Compliance: compliant with GDPR
- Performance analytics: analyze usage patterns
- Predictive maintenance alerts
- Customizable dashboards
- Real-time monitoring



Technical info

GNSS positioning method	GPS, QZSS
GNSS position accuracy	<5m (CEP50)
GNSS hot start / cold start	1.3s / 36s
Geolocate positioning method	Multiple cell towers (when in reach)
Geolocate position accuracy	<50m in urban areas, <200m countryside
Geolocate hot start / cold start	1.3s / 30s
LTE modem	LTE Cat M1, NB-IoT
Frequency range	700MHz to 2.2GHz
Max. LTE data rate	375kbs (LTE Cat M1), 60kbs (NB-IoT)
SIM	Embedded SIM
Power supply	3.2V 600mAh rechargeable LiFePO4 battery
Charge Voltage	5 - 24V (DC)
Battery power reserve	200 Days
CAN-bus protocol	CAN 2.0 A/B (ISO-11898 standard)
Data transfer speed	Up to 1Mb/s
Functions	Transmit, receive
Endianness	Little, big
Operating temperature range	-20°C ~ 65°C (deep sleep mode <0°C)
IP Rating	IP67
Certifications	CE, EMC, RoHS
Dimensions Length	86mm
Dimensions Width	82mm
Dimensions Height	29,5mm

